

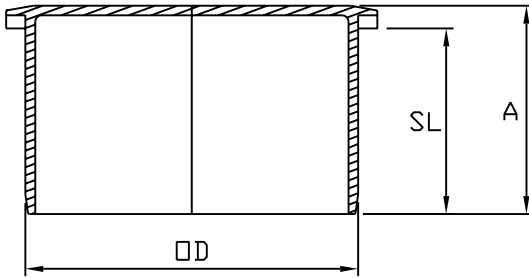


MULTI FITTINGS

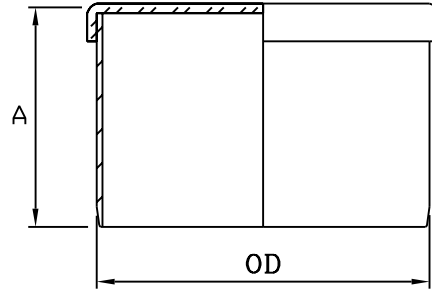
LAYING LENGTH

ISSUE DATE: MAR 31/05
SUPERCEDES: MAY 22/03

SPIGOT PLUG



INJECTION MOLDED FITTING (M)



FABRICATED FITTING (F)

	SIZE	PART NUMBER	REFERENCE NUMBER	A REF	SL REF	OD	
M =	4	067654	HWSP04	3.375	2.875	4.215	084
M =	6	067656	HWSP06	4.000	3.500	6.275	084
	8	067658	HWSP08	-	-	8.400	P
	10	067660	HWSP10	-	-	10.500	P
F @	12	067661	HWSP12	11.000	-	12.500	082
	15	067662	HWSP15	-	-	15.300	P
	18	067663 *	HWSP18	-	-	18.701	P

NOTE: = Refer to Page HW4 for Hub Detail, Type A
 @ Refer to Page HW5 for Hub Detail, Fabricated
 * Available on request