

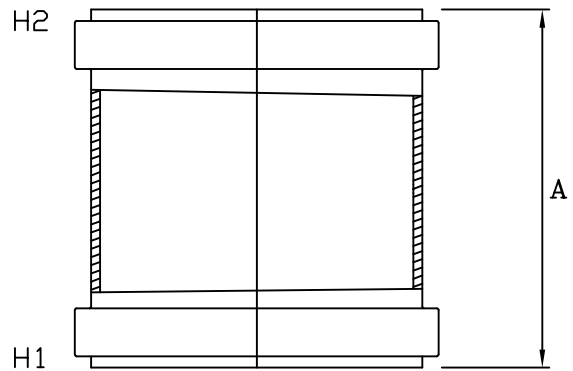
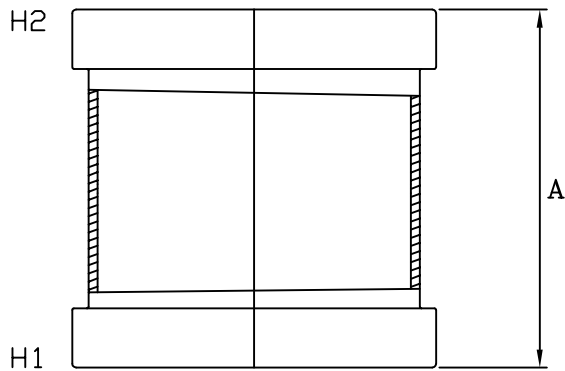


MULTI FITTINGS

LAYING LENGTH

ISSUE DATE: MAR 31/05
SUPERCEDES: FEB 23/01

REPAIR COUPLING (GxG) (NO PIPE STOP)



INJECTION MOLDED FITTING (M)

FABRICATED FITTING (F)

	SIZE H1xH2	PART NUMBER	REFERENCE NUMBER	A REF	
	4x4	067474	HWRCPO4	8.500	P
M =	6x6	067476	HWRCPO6	8.000	084
M =	8x8	067478	HWRCPO8	10.000	084
	10x10	067480	HWRCPO10	-	P
F @	12x12	067482	HWRCPO12	12.000	082
	15x15	067483	HWRCPO15	-	P
	18x18	067484 *	HWRCPO18	-	P

NOTE: = Refer to Page HW4 for Hub Detail, Type A
 @ Refer to Page HW5 for Hub Detail, Fabricated
 * Available on request