

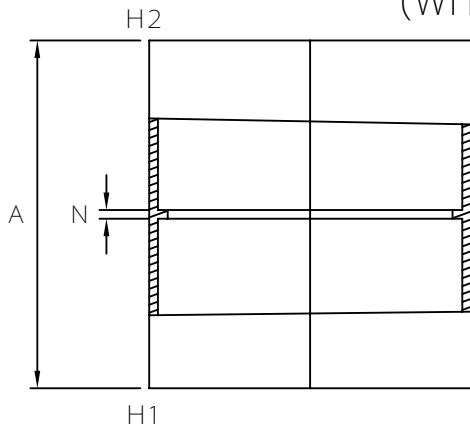


MULTI FITTINGS

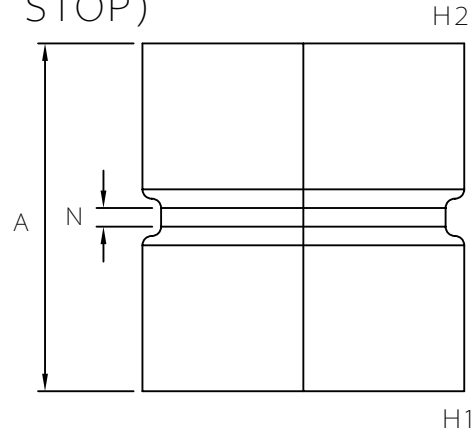
LAYING LENGTH

ISSUE DATE: NOV 15/17
SUPERCEDES: MAY 10/05

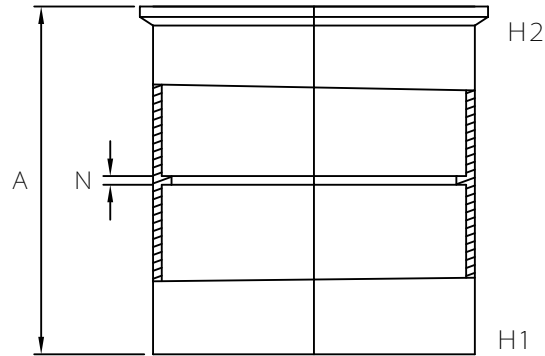
COUPLING (HxH) (WITH PIPE STOP)



INJECTION MOLDED FITTING (M)



FABRICATED FITTING (F)



INJECTION MOLDED FITTING (*M)

	SIZE H1xH2	PART NUMBER	A REF	N REF
M	2x2	040600	2.875	0.125
*M	3x3	040602	3.125	0.125
*M	4x4	040604	3.625	0.125
M	6x6	040606	6.125	0.188
M	8x8	040631	8.250	0.200
F	10x10	040608	13.000	-
F	12x12	040612	15.000	-
F	15x15	040609	18.000	-
F	18x18	040603	22.000	-
P	24x24	040078	-	-