

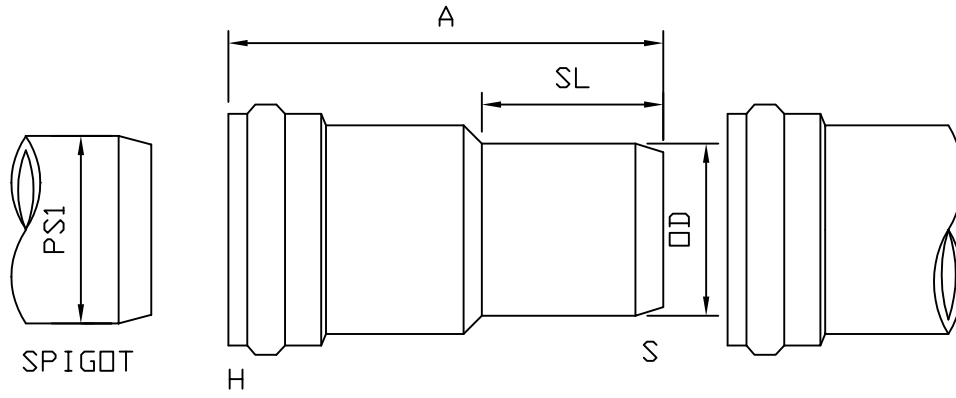


MULTI FITTINGS

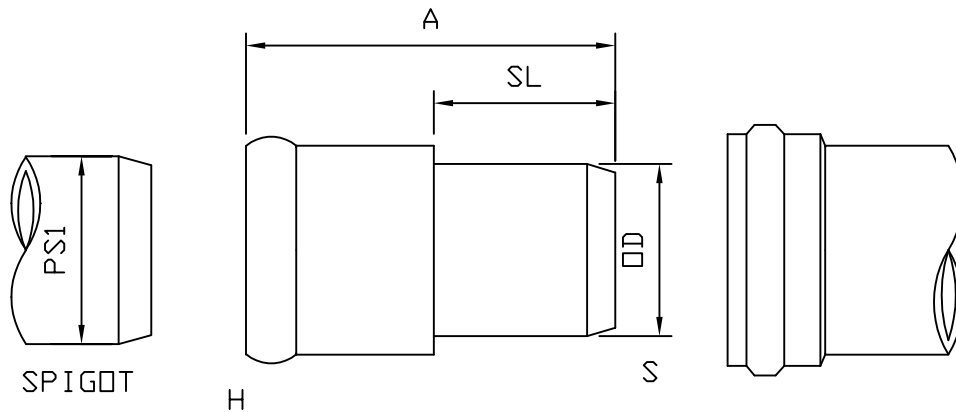
LAYING LENGTH

ISSUE DATE: SEPT 09/05
SUPERCEDES: NOV 02/01

CYCLE TOUGH 4000 SPIGOT ADAPTER (GxSP)



FABRICATED FITTING (F)



MOLDED FITTING (M)

	PS1	SIZE HXS	PART NUMBER	A REF	OD	SL	
M+	1.900	1.5x1.5	055028	-	1.900	-	074
M+	2.375	2x2	055029	-	2.375	-	074
M+	2.875	2.5x2.5	055030	-	2.875	-	074
M+	3.500	3x3	055031	-	3.500	-	074
F@	4.500	4x4	055032	12.500	4.500	5.000	082
F@	6.625	6x6	055033	15.000	6.625	5.500	082

Note: + Refer to Page CT4 for Hub Detail
@ Refer to Page CT5 for Hub Detail